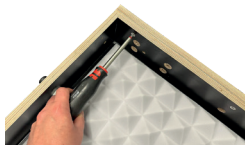


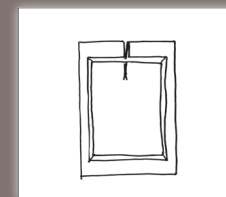
installation frame (backbox)
incl. drywall ceiling kit

installation, see below picture

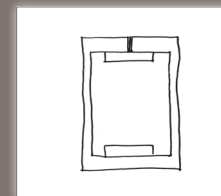


	frame 4080 (1297)	frame 1520 (1291-1)	frame 2525 (1291-2)	frame 4062 (1291)
Size	40,2 x 80,2 x 12 cm	40,2 x 62,2 x 12 cm	40,2 x 62,2 x 12 cm	40,2 x 62,2 x 12 cm
Installation cut out	42,0 x 82,0 x 14 cm	42,0 x 64,0 x 14 cm	42,0 x 64,0 x 14 cm	42,0 x 64,0 x 14 cm
Weight	3,3 kg	2,5 kg	2,5 kg	2,5 kg
Delivery content	installation frame incl. damping material and wooden slats			

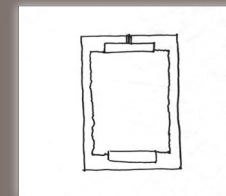
	frame 6062 (1292)	frame 6280 (1299)	frame 62200 (XXXX)	frame 4062 architect (1291-3)
Size*	60,2 x 62,2 x 12 cm	62,2 x 80,2 x 12 cm		133,5 x 62,2 x 14,5 cm
Installation cut out*	62,0 x 64,0 x 14 cm	64,0 x 62,0 x 14 cm		135,5 x 64 x 16,5 cm
Weight	3,7 kg	x		8,2 kg
Delivery content	installation frame incl. damping material and wooden slats			



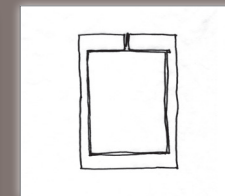
Create recess and feed
loudspeaker cable



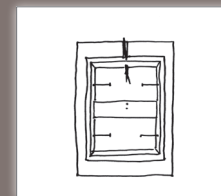
Inserting and aligning the
installation frame



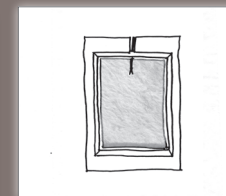
Fix with 2k expansion
foam, e.g.
2K-Ponal Rapido PNR10



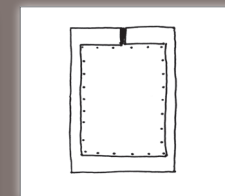
Remove wooden slats and
blanking plate



Dowel frame (optional)



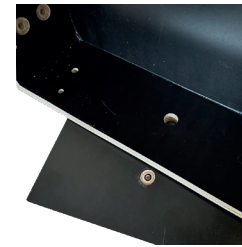
Fill cavity with mineral wool



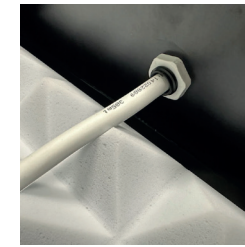
From here the
installation instructions of
the specific models follow

cerasonar installation frame (backbox)

as backbox in drywall or for masonry or in-situ concrete installation



Always use a scrap piece of wood as a base when drilling to prevent the drill edge from fraying.



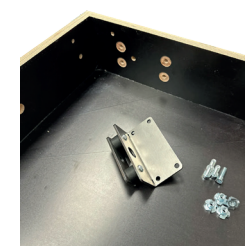
Highly quality sound damping material (Basotect®) with easy to use cable gland with integrated strain relief.



After removing the formwork, remove the OSB blind panel. The loudspeaker can then be installed.



Anti-vibration kit. Rubber buffers effectively reduce structure-borne noise



Parts of anti-vibration kit - for suspended concrete ceilings



Masonry installation kit



In-situ concrete installation (standard)

Installation frames - for masonry, in-situ concrete and backbox

The improved cerasonar installation frame can now be used for even more applications. Thanks to the stable construction made of waterproof plywood and the use of Basotect® insulating material, it is also ideal as a backbox to effectively reduce rear noise. The innovative optional vibration dampers now also make it possible to reduce structure-borne noise.

The housing comes pre-drilled and can therefore be used for various installation environments, such as:

In-situ concrete installation

Masonry installation

Ceiling installation

Vibration damper installation (suspended drywall ceiling)

The installation frame is supplied as standard with high-quality cable glands and integrated strain relief from OBO, insulation material from Basotect® as well as an OSB blank panel and alignment battens.

Installation is easy: the factory pre-drilled holes are enlarged with a suitable drill for the desired application, then the cable gland, insulation material and any accessories are fitted.