

## iw25 In-Wall Loudspeaker



### KEY FEATURES:

- High-Output Weather Resistant In-Wall Loudspeaker
- 2 x 5" Theory carbon fiber Low Frequency Drivers
- 1 x 1.4" Theory AdvancedPoly™ High Frequency Compression Driver on 125° Axisymmetric Waveguide
- 4-ohm or 70V/100V Operation, Selectable
- White Bezel-Free Perforated Paintable Metal Grille
- Maximum 117dB/1m from Enclosure only 3.4" Deep
- Ultra-Wide 125° Conical Coverage (160°@10kHz, -12dB)
- Highest Performance Available in its Class

### OVERVIEW:

The iw25 fully-enclosed in-wall loudspeaker is the remarkable sb25 model, with a mechanical enclosure to adapt it to in-wall mounting. All of the sb25's performance attributes remain: robust, wide-bandwidth and dynamic sound with uncanny accuracy and naturalness. The ability of the iw25 to fill large spaces with full-bodied, thrilling sound is shocking. Finally big sound in background and foreground applications does not have ugly, or even visible!

The iw25 in-wall loudspeaker can be operated at low-Z (4-ohms impedance) or by employing its included internal power transformer at hi-Z (70V/100V) at 60W, 30W, 15W and 7.5W.

Like its sister product, the sb25, the iw25 discreet in-wall loudspeaker will have you rethinking how you deploy audio in your premium system designs.

Just like the sb25, the iw25 measures ruler flat, smooth, and extended insuring the highest accuracy and resolution. The dispersion is very wide and very uniform all the way to the very top audio octave, providing wide-band, detailed sound.

The performance and versatility of the iw25 must be experienced to be believed. Book a visit to the Theory Southern California Experience Center today to learn just how valuable this little loudspeaker will be in your system design toolbox.

### APPLICATIONS:

#### Background and Foreground Business Music Systems

Bars and sports bars, restaurants, retail stores, hotels, houses of worship, corporate conference, screening rooms and lobbies, casinos, etc.

#### Music and Video Post Production

Surround and Dolby Atmos mix rooms where maximum output in compact depth is required, music post production.

#### High Output Surround Sound Systems

Residential and commercial media rooms, gaming systems, executive boardrooms.

#### Premium Outdoor and Marine

Residential and commercial outdoor spaces, patios, yachts.

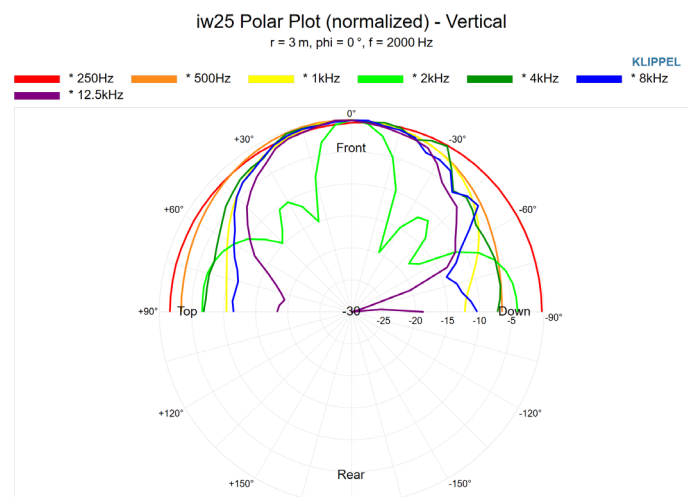
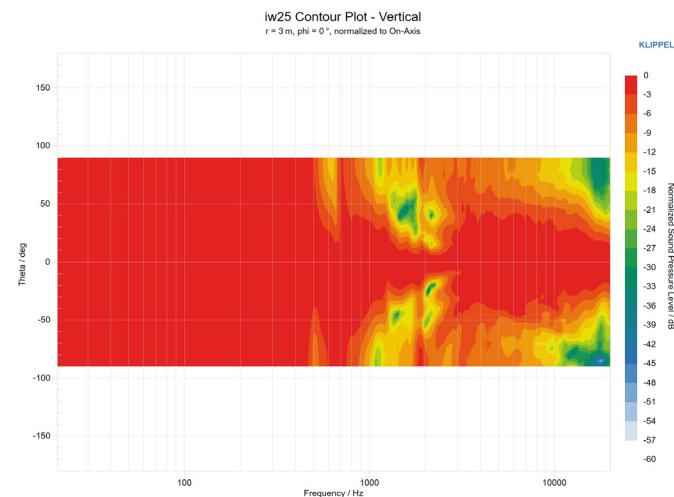
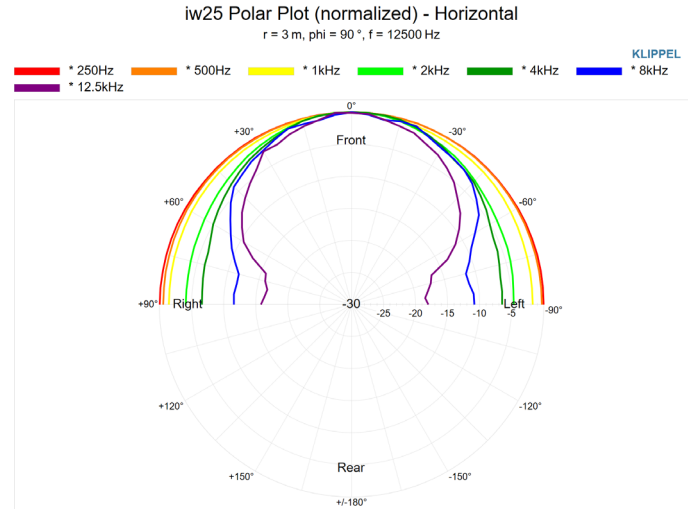
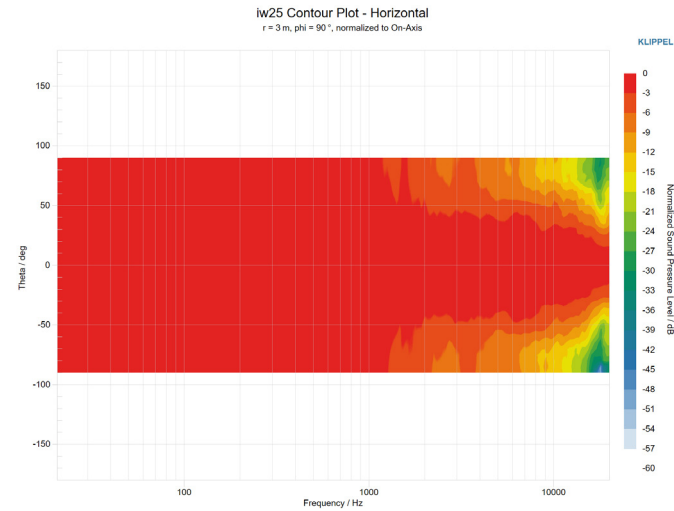
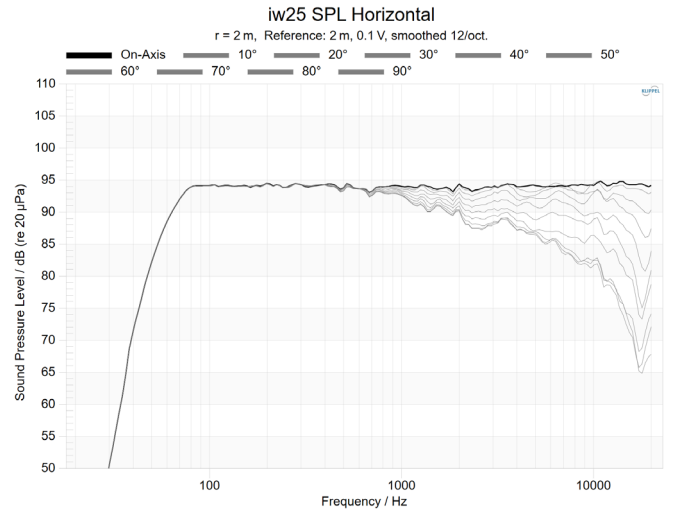
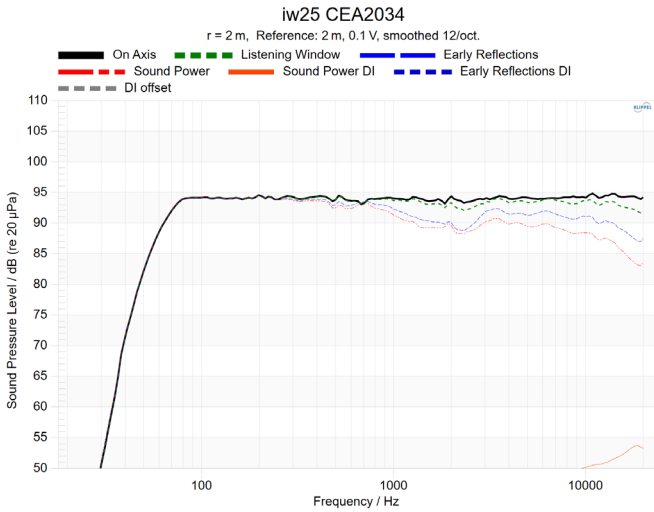
## iw25 Specifications<sup>1</sup>

<b>Description:</b>	High-Output Weather Resistant In-Wall Loudspeaker
<b>Operation:</b>	Passive, Requires One (1) Theory Loudspeaker Controller Amp Channel 4-ohms or 70V/100V Operation, Selectable
<b>DSP Requirements:</b>	<b>Requires Model-Specific Theory-Certified DSP Loudspeaker Processing</b>
<b>Drivers:</b>	2 x 5" Theory Carbon Fiber Low Frequency Drivers 1 x 1.4" Theory AdvancedPoly™ High Frequency Compression Driver
<b>Enclosure:</b>	Molded ABS Frame with Powder Coated Steel Integral Back Can, Metal Grille
<b>Terminals:</b>	Euroblock Connector with Parallel Output
<b>Outdoor Capability:</b>	Indoor and Outdoor Use (when used with optional iw25 all-weather grille)
<b>Mounting Points:</b>	6 Retractable Dog Ears
<b>Bandwidth:</b>	51Hz - 23kHz, -6dB; 46Hz -24kHz, -10dB
<b>Coverage:</b>	125 Degrees Conical 160 Degrees Conical (-12dB @ 9.8kHz)
<b>Sensitivity:</b>	94dB <sup>2</sup> (LF); 108dB <sup>2</sup> (HF) SPL/2.83V/1m
<b>Power Handling:</b>	200W (AES); 400W (Continuous); 800W (Peak)
<b>Minimum Recommended Power:</b>	50W rms
<b>Maximum Output:</b>	117dB SPL / 1m (based on AES power rating, LF sensitivity) 123dB SPL / 1m (peak)
<b>Nominal Impedance:</b>	4-ohms; Hi-Z (70V/100V) Selectable
<b>Transformer Taps:</b>	60W, 30W, 15W, (7.5W, 70V)
<b>Colors:</b>	White Perforated Paintable Metal Grille
<b>Dimensions:</b>	Speaker: 23.5" H x 9.63" W x 3.4" D (597mm H x 246mm W x 86mm W) Grille: 23.63" H x 9.5" W (600mm H x 241 mm W) Cutout: 8.75" W x 22.625" H (222mm W x 575mm H)
<b>Total Installed Depth:</b>	3.4" (86mm)
<b>Maximum Wall Thickness:</b>	1.5" (38mm)
<b>Net Weight:</b>	15 lbs. (6.8 kg)
<b>Included Accessories:</b>	White Bezel-less Paintable Rectangular Indoor Grille Cutout Template
<b>Optional Accessories:</b>	White Paintable Rectangular All-Weather Grille

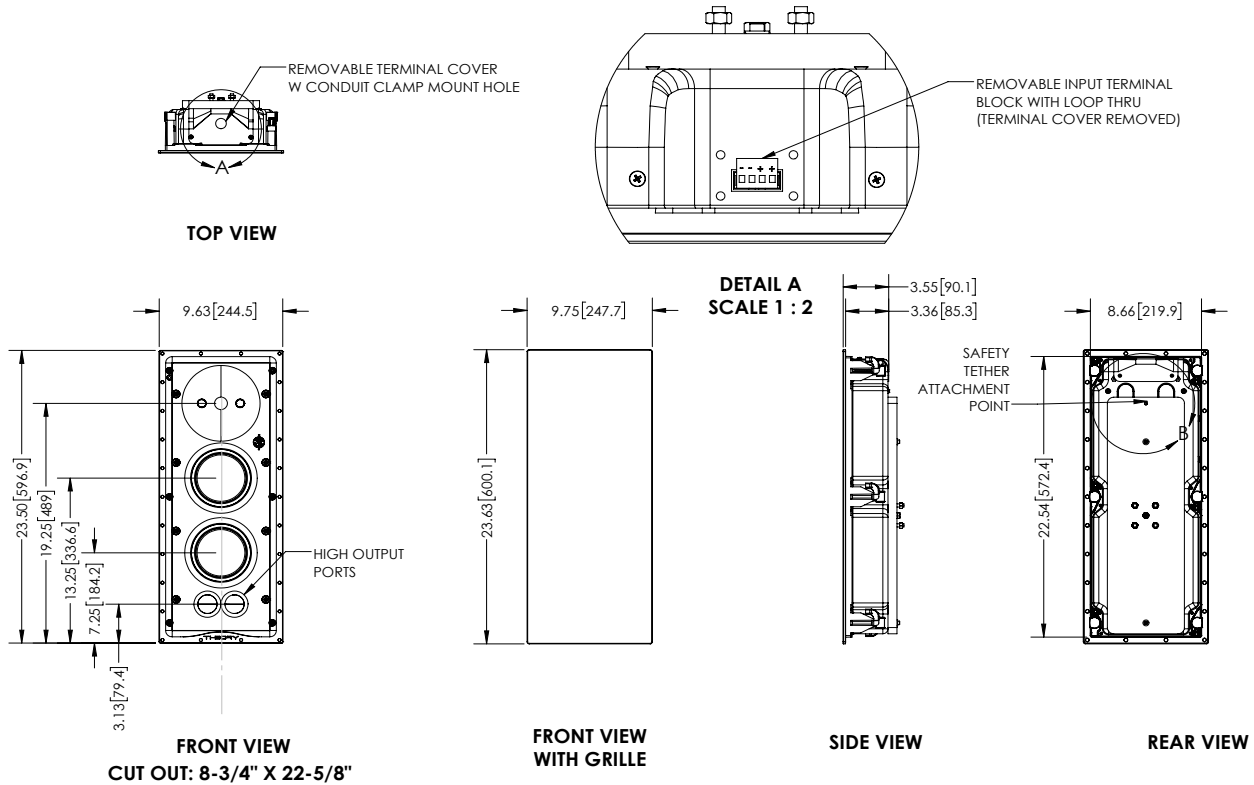
<sup>1</sup> - Specifications when used with required Theory-Certified DSP loudspeaker processing. Failure to use Theory-Certified processing may cause damage, degrades performance and voids manufacturer warranty.

<sup>2</sup> - The loudspeaker employs a passive internal crossover network so only one amp channel is needed to drive the unit. LF and HF sensitivity figures are shown separately because the network does not attenuate the HF signal in a traditional way, driver level balancing is accomplished in required DSP processing. This technique preserves some of the benefit of bi-amplification while only requiring a single amplifier channel.

# iw25 Measurements



## iw25 Dimensions



## iw25 Architectural Specifications

The loudspeaker shall be of the two-way type comprising a single in-wall, molded ABS and powder coated steel enclosure containing two (2) 5" (130mm) carbon fiber cone, butyl rubber surround low frequency transducers and one (1) 1.4" (35mm) engineered polymer compression high frequency transducer. It shall utilize a bezel-less removable white perforated paintable metal grille. Frequency range shall be 51Hz – 23KHz (-6dB). Total power handling shall be 200 Watts (AES); 400W continuous program. Sensitivity measured with 2.83 volts input at 1 meter on axis shall be 94dB. The loudspeaker shall operate via a single connected amplifier channel of suitable power via an internal passive crossover network and *must be combined with external Manufacturer-Certified DSP Processing*. The unit shall have a selectable input impedance of 4-ohms or 70V/100V operation. The loudspeaker enclosure shall be constructed from a ported molded ABS baffle and an integral powder coated steel back can. The external wiring connector shall be 4-position Euroblock with parallel connection and shall accept up to 12 gauge bare wire. External dimensions shall be 23.5" Height x 9.63" Width x 3.4" Depth (597mm H x 246mm W x 86mm W). The total loudspeaker shall weigh 15 lbs. (6.8 kg) per unit. The loudspeaker shall be the Theory Audio Design iw25 In-Wall Loudspeaker.

© 2023 THEORY AUDIO DESIGN, LLC. All rights reserved.

Theory Audio Design, LLC dba Theory Professional routinely engages in programs to improve, modify and revise its products without notice or obligation.

### THEORY AUDIO DESIGN, LLC dba THEORY PROFESSIONAL

25741 Atlantic Ocean Drive, Suite B  
Lake Forest, CA 92630

Tel: 949-245-0505  
www.theoryaudiodesign.com